

## EcoPlus and EcoSlim Drawings and Charts (24PS HLG)

### Wiring Diagrams:

EL001199 - Without Dimmer

EL001200 - With Dimmer

EL001201 - Lutron Diva Dimmer with Multiple Power Systems

EL001202 - Lutron Lyneo Dimmer with Multiple Power Systems

For:

EP22 Series = EP22, EP22M, EP22G

EP24 Series = EP24, EP24M, EP24G

EP26 Series = EP26, EP26M, EP26G

EP34 Series = EP34, EP34M, EP34G

EP33 Series = EP33, EP33M, EP33G

EP36 Series = EP36, EP36M, EP36G

EP44 Series = EP44, EP44M, EP44G

ES22 Series = ES22, ES22M, ES22G

ES24 Series = ES24, ES24M, ES24G

ES26 Series = ES26, ES26M, ES26G

ES33 Series = ES33, ES33M, ES33G

ES34 Series = ES34, ES34M, ES34G

ES36 Series = ES36, ES36M, ES36G

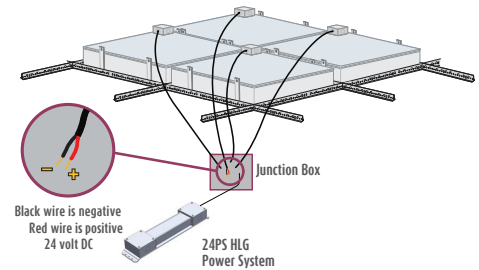
ES44 Series = ES44, ES44M, ES44G

### Sky Factory 24PS HLG Power System Dimensions and Weights

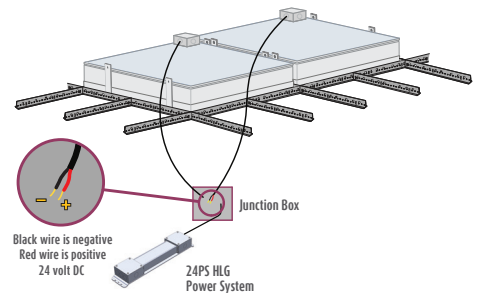
### Wire Sizing Chart

For technical support at any time during the installation, please call us **toll free at 866-759-3228**.

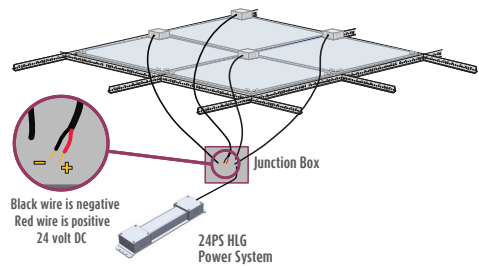
We want your installation to go as smoothly as possible. Thank you for choosing The Sky Factory.



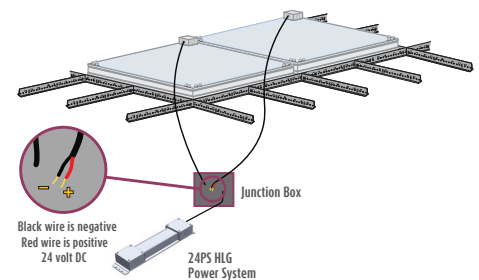
Classic w/ EcoPlus – EP22 & 24 Series



Revelation w/ EcoPlus – EP26,33,34,36 & 44 Series



Classic w/ EcoSlim – ES22 & 24 Series

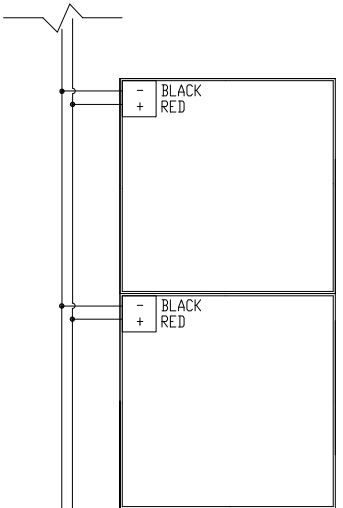


Revelation w/ EcoSlim – ES26,33,34,36 & 44 Series

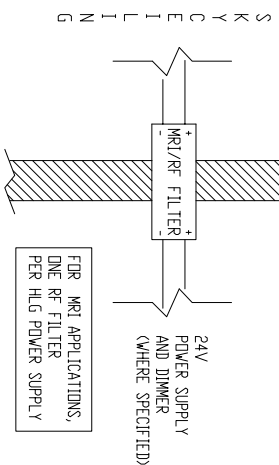
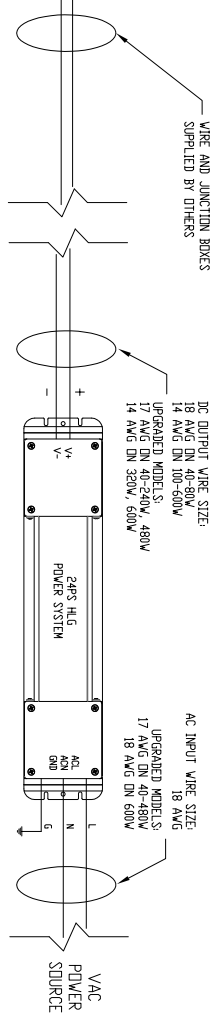
EP AND ES SERIES FIXTURES  
WITH 24PS HLG POWER SYSTEM  
NON-DIMMING OPTION

ECDPLUS  
EP22 SERIES, EP24 SERIES,  
EP26 SERIES, EP33 SERIES,  
EP34 SERIES, EP36 SERIES  
AND EP44 SERIES

ECDUSLM  
ES22 SERIES, ES24 SERIES,  
ES26 SERIES, ES33 SERIES,  
ES34 SERIES, ES36 SERIES  
AND ES44 SERIES



- NOTES:
1. ALL FIXTURES 24V DC ONLY.
  2. JUNCTION BOX ATTACHED TO EACH FIXTURE:  
WIRE SIZE 18 AWG STRANDED
- WIRE COLORS:  
RED (+) POSITIVE  
BLACK (-) NEGATIVE
3. SEE ALSO WIRE SIZING CHART.



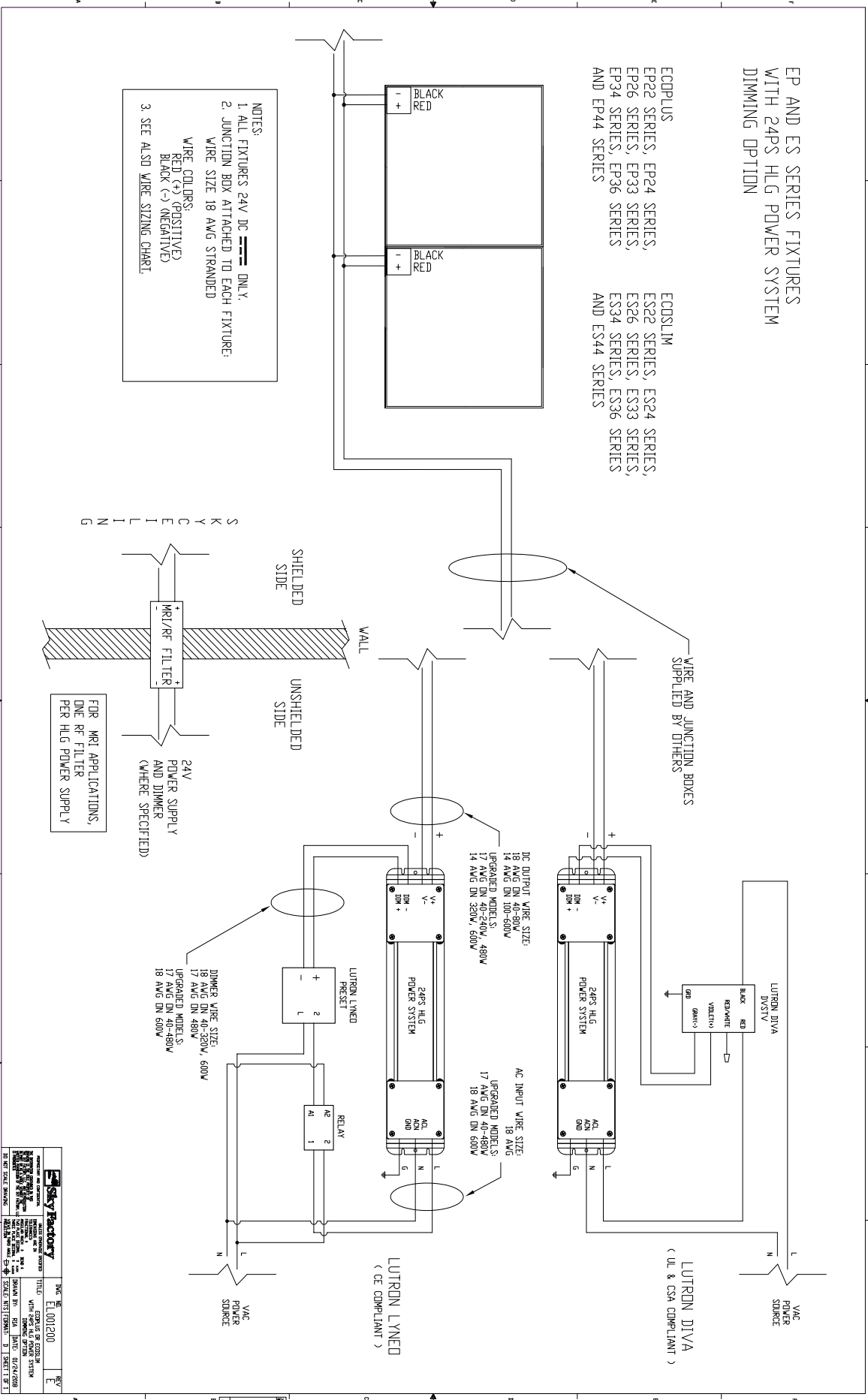
FOR MRI APPLICATIONS,  
ONE RF FILTER  
PER HLG POWER SUPPLY

MANUFACTURED AND DISTRIBUTED BY: SILLY FACTORY, INC. 10000 W. 15TH AVE. SUITE 100 DENVER, CO 80202 TEL: 303.751.1500 FAX: 303.751.1501 WWW.SILLYFACTORY.COM	DC# NO. ELO01199 E
TITLE: 24PS HLG POWER SYSTEM WIRE SIZING CHART DRAWN BY: EJA DATE: 02/24/2008 CHECKED BY: JTB DATE: 03/11/2008 SCALE: VERT: 1/8" = 1" HORIZ: 1/8" = 1"	DC# NO. ELO01199 E

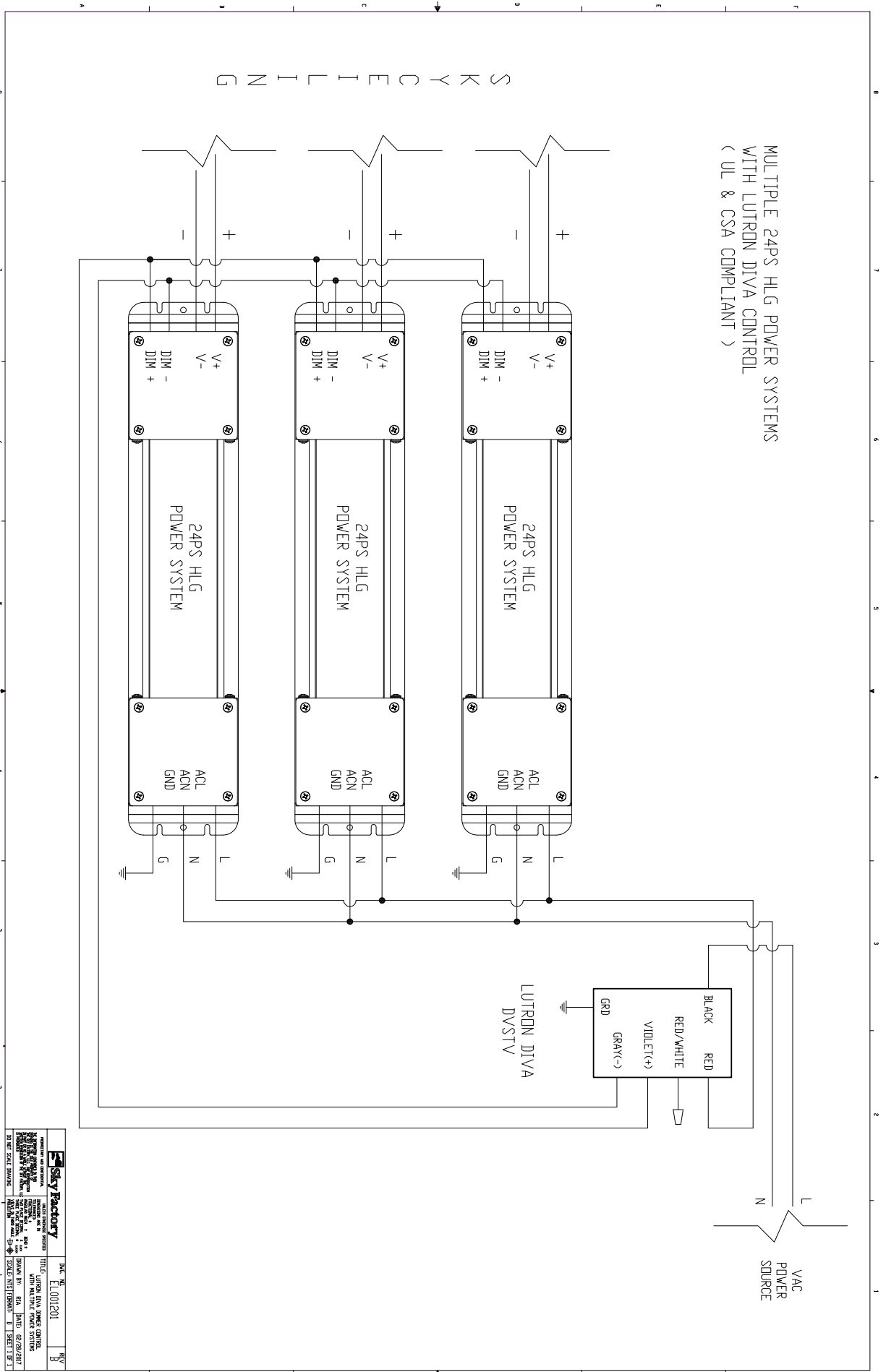
EP AND ES SERIES FIXTURES  
WITH 24PS HLG POWER SYSTEM  
DIMMING OPTION

ECDPLUS  
EP22 SERIES, EP24 SERIES,  
EP26 SERIES, EP33 SERIES,  
EP34 SERIES, EP36 SERIES  
AND EP44 SERIES

ECDSLIM  
ES22 SERIES, ES24 SERIES,  
ES26 SERIES, ES33 SERIES,  
ES34 SERIES, ES36 SERIES  
AND ES44 SERIES

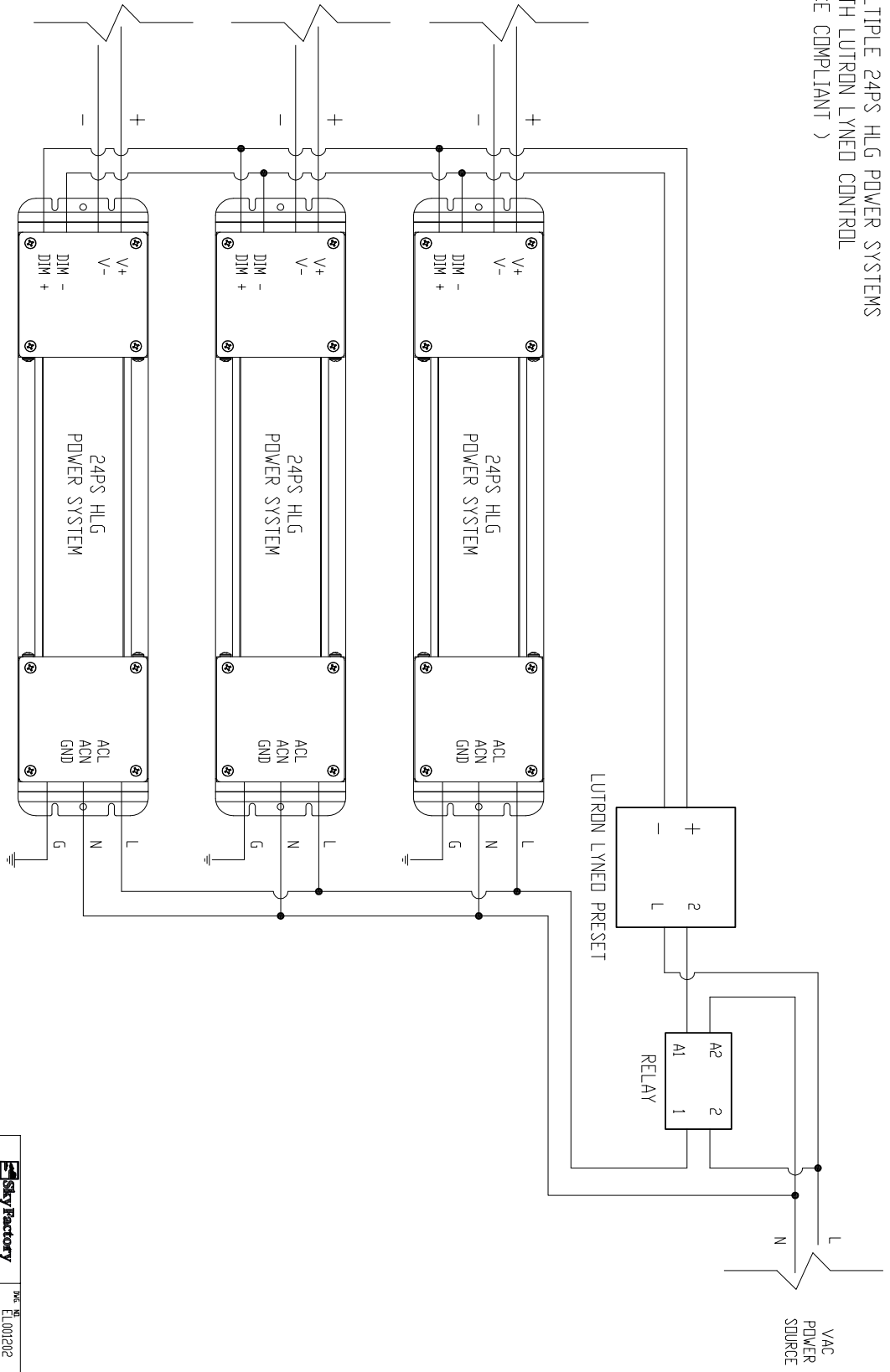


MULTIPLE 24PS HLG POWER SYSTEMS  
WITH LUTRON DIVA CONTROL  
( UL & CSA COMPLIANT )



<b>Sky Factory</b>	SKY No.	ELO0201	REV	3
REGISTERED OR REGISTERED TRADEMARK OF SKY FACTORY, INC.	TITLE	LUTRON DIVA DIMMER CONTROL WITH MULTIPLE POWER SYSTEMS		
© 2017 SKY FACTORY, INC. ALL RIGHTS RESERVED.	ISSUE NO.	001	DATE	02/28/2017
2017 SKY FACTORY, INC.	SCALE	1/8"=1'-0"	SHEET NO.	3

MULTIPLE 24PS HLG POWER SYSTEMS  
 WITH LUTRON LYNEO CONTROL  
 ( CE COMPLIANT )



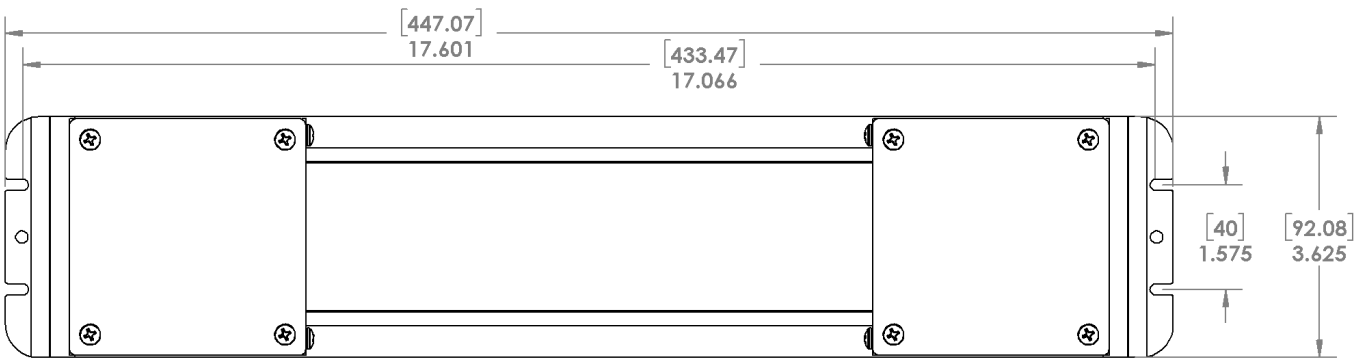
S K Y C E I L I N G

<p><b>Sky Factory</b>                  MANUFACTURER OF DIMMABLE                  LED LIGHTING FIXTURES                  1000 WILSON BLVD                  SUITE 100                  BOSTON, MA 02118                  TEL: 617-252-1111                  WWW.SKYFACTORY.COM</p>	SKY TITLE: LUTRON LYNEO DIMMER CONTROL & RELAY DRAWN BY: SKY DATE: 02/28/2017 SCALE: N/A SHEET NO: 1 OF 1
	REF: EL001202 8/17

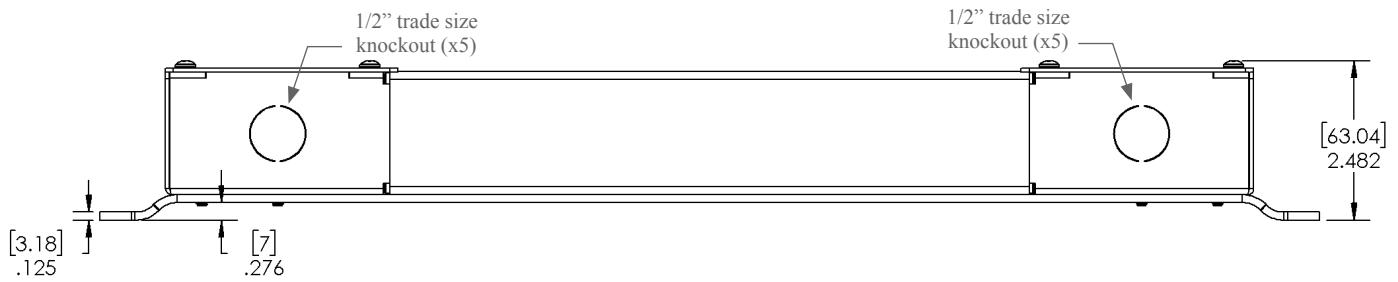
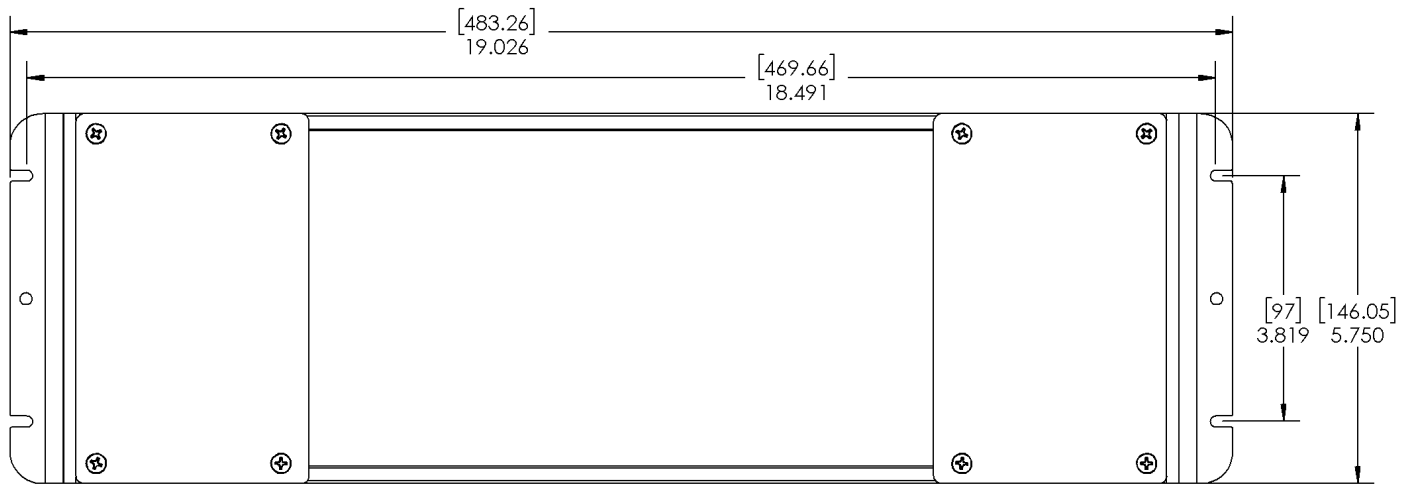
## Sky Factory 24PS HLG Power System Dimensions and Weights:

DIMENSIONS AND WEIGHTS				
	LENGTH	WIDTH	HEIGHT	WEIGHT
40 WATT 60 WATT	18 IN	3.7 IN	2.4 IN	3 LBS
	45.8 CM	9.4 CM	6.1 CM	1.4 KG
80 WATT 100 WATT 120 WATT 150 WATT 185 WATT 240 WATT	18 IN	3.7 IN	2.4 IN	4 LBS
	45.8 CM	9.4 CM	6.1 CM	1.8 KG
320 WATT	18 IN	3.7 IN	2.4 IN	6 LBS
	45.8 CM	9.4 CM	6.1 CM	2.7 KG
480 WATT	19.1 IN	5.8 IN	2.5 IN	8 LBS
	48.5 CM	14.8 CM	6.4 CM	3.6KG
600 WATT	19.1 IN	5.8 IN	2.5 IN	10 LBS
	48.5 CM	14.8 CM	6.4 CM	4.6 KG

Mounting dimensions: 40W, 60W, 80W, 100W, 120W, 150W, 185W, 240W, 320W 24PS HLG Power Systems



Mounting dimensions: 480W, 600W 24PS HLG Power System



## Wire Sizing Chart

This chart is a guideline for recommended wiring practice.

Applies to 24V DC power only, i.e. from “fixture to power system.”

Not meant for “V AC to power system” nor “dimmer to power system.”

Wire sizes in AWG Conversion chart below.

Distance: Feet (Meters)	AWG for 5A	AWG for 10A	AWG for 15A
20 (6)	18	14	12
30 (9)	16	12	10
40 (12)	14	10	10
50 (15)	12	10	*
60 (18)	12	10	*
80 (24)	10	*	*
100 (30)	10	*	*

\* Terminal block wire range #10 - #22 Awg.

AWG	MM
10	6.271
11	5.156
12	3.302
13	2.629
14	2.088
15	1.652
16	1.308
17	1.039
18	0.823